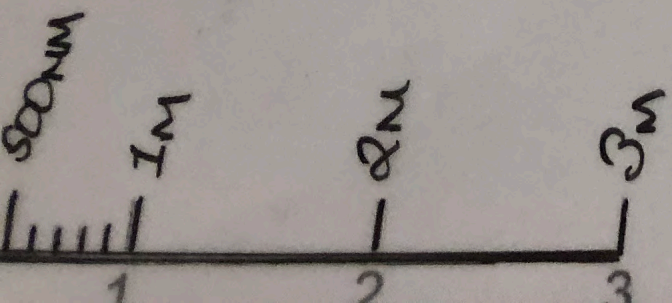
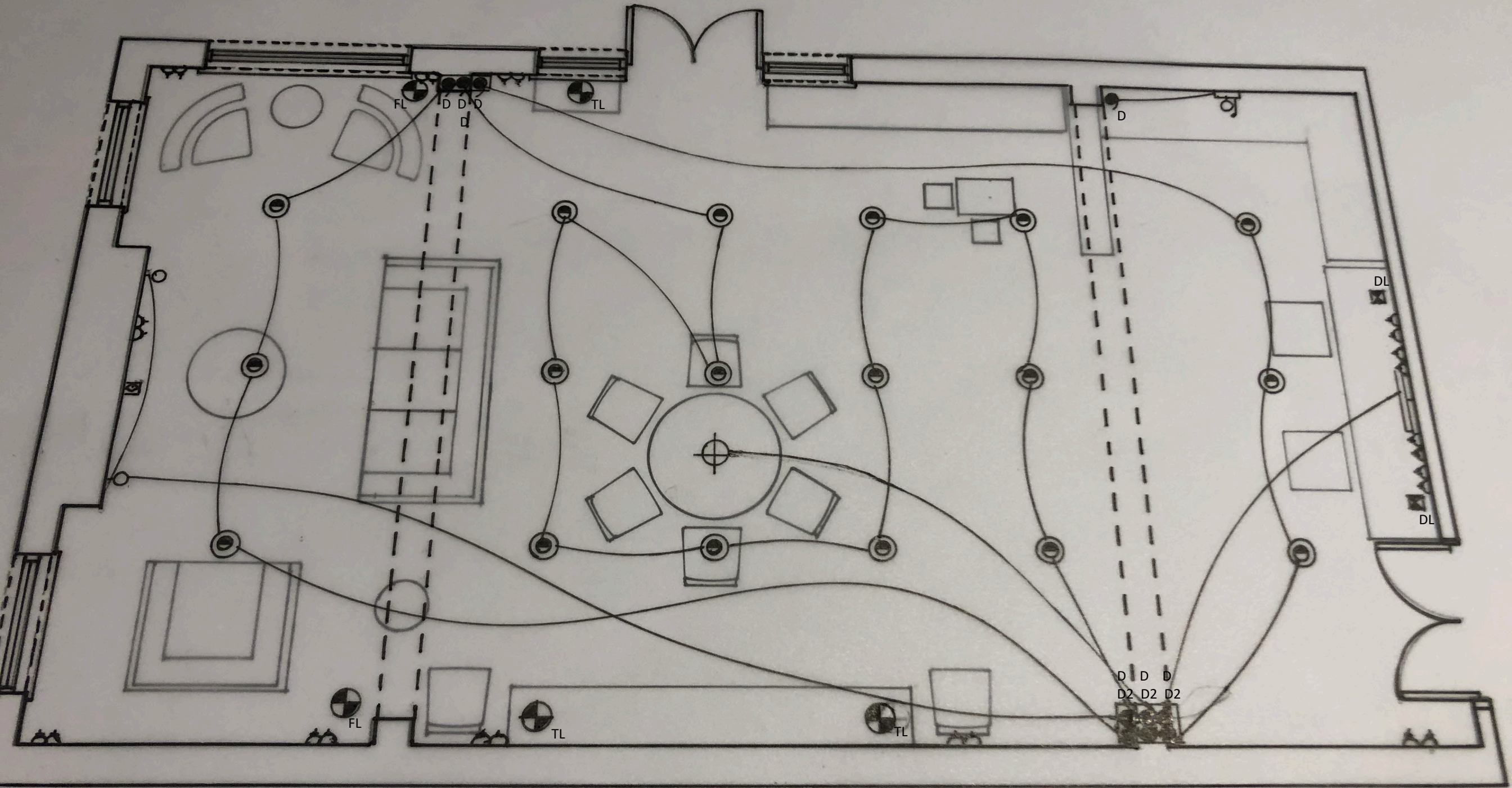


Lighting Plan

Multipurpose Room

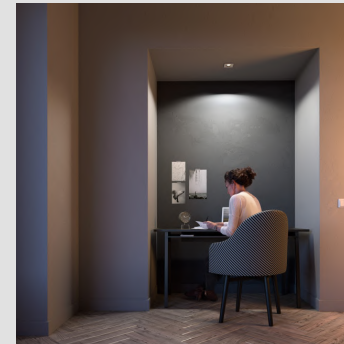


Ambient Lighting Solutions

Lighting Product 1

Name of the products and the designers or manufacturers.

[Philips Hue Milliskin](#) LED downlights with Philips Hue Bridge to control lighting plus switches that convert to remove controls; £405.59 from Lights to Go



Lighting Product 2

Name of the products and the designers or manufacturers.

[Adjustable Wall - 2 Light Wall Bracket](#) Led Flexi Arm Antique Brass with white shade £67.03 from Lights to Go. Pair with a Philips Hue E27 bulb



Describe the lighting mood and atmosphere and how this has been created with both of your ambient lighting products.

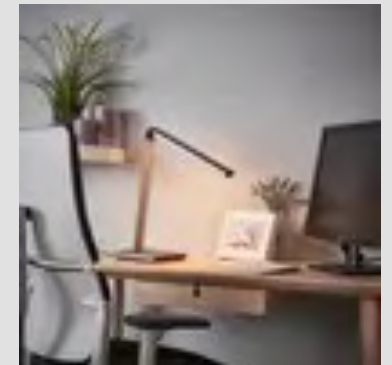
- 1) The main ambient lighting will be supplied via Philips Hue Milliskin LED downlights. They will be on 3 circuits: dining & play; reading & work/study; and sofa area (i.e. to left, central, and right of beams). Philips Hue products are dimmable and can be controlled by either your phone app or a remote control that is detachable from the switch casing on the wall. They can also be put on a timer for security purposes.. These bulbs have 4 dimming settings using up to 350 lumens to produce light of 6,500 to 2,200 Kelvins, from cool day light to warm white and will therefore work in all areas or the room in any season. For example the study/work area has little natural light and in winter could be very dull. In this instance cool day light could be used.
- 2) Being conscious that the reading area and study/work area are in the same downlight zone but may have different light needs, the reading area will have its independent separate wall/reading light which is likely to be the main source of light for this area. For example, in the evening the zone downlights would be off and Annika could still relax & read in the reading area using this light. While the reading LED light is controlled at point of use the wall light will be connected to the Philips Hue Bridge system with an E27 white ambience bulb with a lumen output of between 520 and 830 to produce to same amount of light as in light 1.

Task Lighting Descriptions Solutions

Lighting Product 1

Name of the products and the designers or manufacturers.

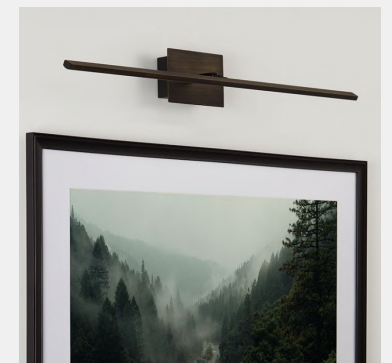
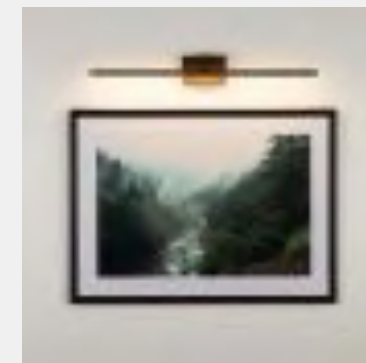
[Kuno Metallic grey LED table lamp with dimmer](#) by Lindby £68.90 from Lights.co.uk



Lighting Product 2

Name of the products and the designers or manufacturers.

[Edit Hepworth 600 LED Picture Light](#) – Bronze - £39.99 from Lighting Direct





Describe the lighting mood and atmosphere and how this has been created with both of your task lighting products.

1) As both photography and jewellery making are detailed hobbies, it is vital there is directional light. Therefore in addition to the ambient scheme there will be desk lamps on each desk that John and Annika can use if required. These are plugged into a socket on the wall or via USB and can be linked to the Philips Hue system with Hue Smart Plugs. The light produces 1000 lumens for 3,000 kelvins producing a warm white and will last approximately

2) The Wall Print by Derbyshire artist, Joanna Allen will be lit with this LED picture light. It is connected to the mains, not battery operated and therefore with 3,000 Kelvins and lighting the picture with a soft warm white glow, the task of this light is purely to show off the picture. LED should last 15,000 hours and will be incorporated into Philips Hue system as an independent light source.

Task A – Decorative Lighting Solutions

<p>Lighting Product 1</p> <p>Name of the products and the designers or manufacturers.</p>	<p>Wine Glass hanger with 6 lights . Frame supplied, wine glasses to be supplied by purchaser. Home Lava - £221.72</p>	
<p>Lighting Product 2</p> <p>Name of the products and the designers or manufacturers.</p>	<p>Vogue Secret Floral Wall Light x 2 Dunelm - £35 each</p>	
<p>Describe the lighting mood and atmosphere and how this has been created with both of your decorative lighting products.</p>	<p>1) This decorative Wine Glass Chandelier will sit central to the middle of the dining table and will contain 6 Philips Hue Smart Dimmable Filament Bulbs with a Lumen output of 300 at a 2,100 Kelvins meaning the soft white glow over the dining table in the evening provides an elegant and inviting environment in which to entertain guests. It does mean the the table position is fixed unless the light is moved (although will remain central when the table is extended). However, on balance this is a small cost to pay for such a fantastic addition to the space.</p> <p>2) These wall lights will sit either side of the television on the stone clad chimney breast and will also be lit with Philips Hue Dimmable E14 bulbs. However, these will not be Filaments and with a Lumen output of 320 – 470 lumens and colour temperature of 2,200 to 6,500 Kelvins, they can provide a light range from warm white to cool day light. It should be remembered that when the TV is not on it will be a piece of art work and this lighting can be used to display the art too.</p>	

Indicative Lighting Plan

In addition to the wiring and electrics detailed in the indicative lighting plan, it is proposed and the light-bulbs, recessed downlights and smart plugs for table, floor and desk lamps are all connected by a Philips Hue Bridge. This means that the Moores can link groups of lights digitally and use either an app or their phone, or their voice if they decide to have an Alexa, to control their lighting. There is the added advantage that all the lights on the circuit will be able to have timers on should the Moores wish. As part of the installation the following hubs will be created on the Hub for the Moores:

- Hub 1 – All Recessed Downlights
- Hub 2 – Recessed Light in Living Room Zone
- Hub 3 – Recessed Lights in Central Zone
- Hub 4 – Recessed Lights in Reading & Desk Zone
- Hub 5 – Table, Floor and Wall Lights
- Hub 6 – Desk Lights

They also may at a later stage decide to add further rooms using this technology.